

TIGER DRYLAC®

special effect

powder coatings



TIGER Drylac®
Powder Coatings

special effects

■ Fluorescent One-Coat

■ Fluorescent Two-Coat (below)



■ Yellow
49/22200



■ Neon Yellow
59/20043



■ Bright Pink 49/30430
White Basecoat 49/11000



■ Red-Orange
49/24620



■ Neon Pink
59/30075



■ Red 49/30760
White Basecoat 49/11000

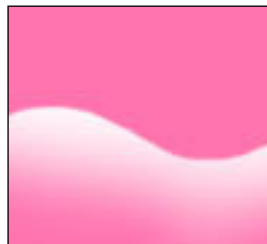


■ Orange
49/24610

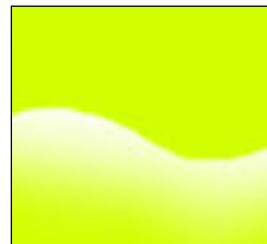
■ Fluorescent Two-Coat



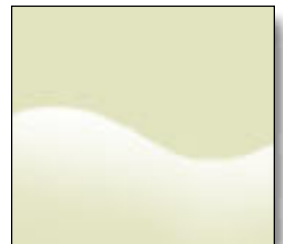
■ Pink 49/32600
White Basecoat 49/11000



■ Light Pink
49/30520



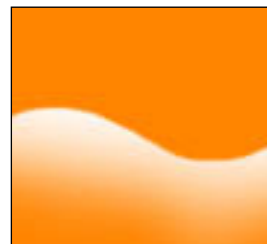
■ Yellow 49/21500
White Basecoat 49/11000



■ Glow-In-The-Dark 49/52100
White Basecoat 49/11000



■ Green
49/51340

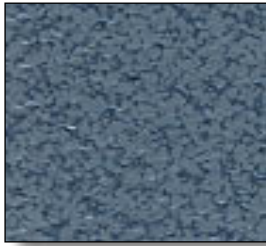


■ Orange 49/24080
White Basecoat 49/11000

■ Hammertone



■ Nu-Red
89/32877



■ Nu-Pale Blue
89/43007



■ Nu-Sepia
89/60667



■ Nu-Light Silver
89/90987



■ Nu-Turquoise
89/40117



■ Nu-Reseda
89/50567



■ Nu-Brown
89/62387



■ Nu-Purple
89/40127



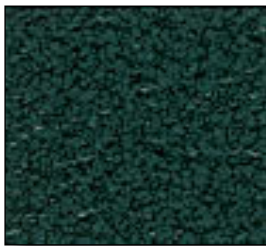
■ Nu-Green
89/50577



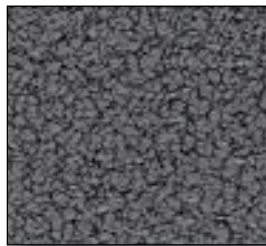
■ Nu-Black
89/90087



■ Nu-Capri
89/40757



■ Nu-Malachite
89/50937



■ Nu-Silver
89/90257



■ Nu-Sapphire
89/40767



■ Nu-Kiwi
89/53127



■ Nu-Gold Brown
89/90287

■ Anticos (below)



■ Nu-Light Silver
89/90987

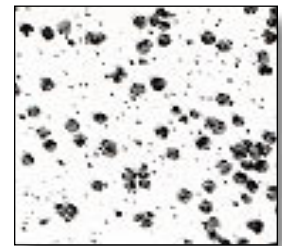


■ Nu-Light Silver
89/90987

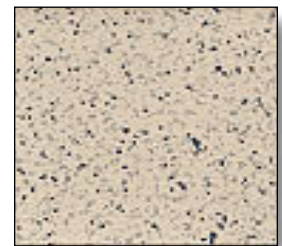


■ Nu-Light Silver
89/90987

■ Anticos



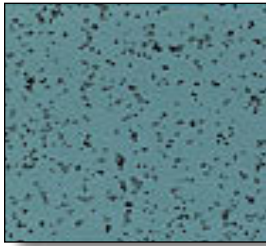
■ White
59/10167



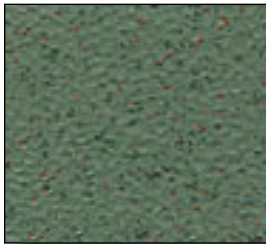
■ Sandstone
59/15830

■ Transparent and Candy

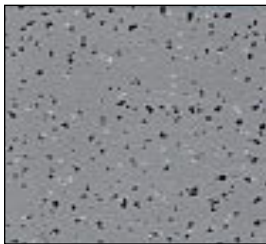
All Transparent and Candy colors are shown over nickel-plated substrate. Alternate substrates: Brushed Aluminum, Chrome, Tiger Drylac 49/91260 Mirror Silver



■ Patina
59/55410



■ Copper Leaf
59/55490



■ Slate
59/76940



■ Granite
59/77240



■ Gold
49/20170



■ Brass
49/20180



■ Copper
49/63130



■ Transparent Red
49/35810



■ Transparent Blue
49/46110



■ Transparent Green
49/55730



■ Candy Raspberry
49/31570



■ Candy Red
49/33340



■ Candy Purple
49/41480



■ Candy Teal
49/42130

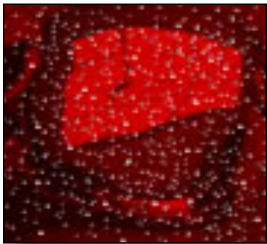


■ Candy Blue
49/43600

■ Dormant Transparent and Clear



Yellow 49/21220
Topcoat Glitter Silver 49/00320



Red 49/31370
Topcoat Glitter Gold 49/00310



Red Gold 49/21240
Topcoat Clear Matte 16/00030



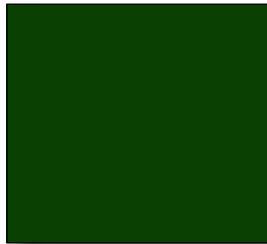
Blue 49/40940
Topcoat Clear Gloss 39/00020



Light Blue 49/40960
Topcoat Clear Gloss 49/00530



Violet 49/41100
Topcoat Clear Gloss 49/00530



Green 49/50200
Topcoat Clear Ice Matte 69/00300



Black 49/80260
Topcoat Clear Matte 16/00030

■ Textured and Matte



RAL 3000
Smooth Gloss



RAL 3000
Smooth Matte



RAL 3000
Fine Texture



RAL 3000
Rough Texture Glossy



RAL 3000
Rough Texture Matte

Note

Colors and textures have been matched as closely as possible. Paper and ink limitations as well as influence of heat and light account for differences from actual coatings.

Offices and Warehouses

West Coast

1251 E. Belmont Street
Ontario, CA 91761
Phone: (909) 930-9100
Fax: (909) 930-9111

Northwest

18808 142nd Avenue N.E.
Suite 5B
Woodinville, WA 98072
Phone: (425) 481-3160
Fax: (425) 481-1136

Midwest

3855 Swenson Avenue
St. Charles, IL 60174
Phone: (630) 513-9999
Fax: (630) 513-9998

East Coast

1100 Commons Blvd.
Reading, PA 19605
Phone: (610) 926-8148
Fax: (610) 926-8149

Southeast

3400 Town Pt. Drive NW
Suite 140
Kennesaw, GA 30144
Phone: (770) 218-2490
Fax: (770) 218-2495

South

339 Exchange Drive
Arlington, TX 76011
Phone: (817) 277-7995
Fax: (817) 277-1931



Textured and Matte Finishes: The following selection of 38 of our 187 smooth glossy RAL colors are also available in a variety of other finishes:

RAL 1001	RAL 5009	RAL 7035	RAL 9016
RAL 1007	RAL 5010	RAL 7038	RAL 9018
RAL 1013	RAL 5012	RAL 7040	
RAL 1015	RAL 5015	RAL 7044	
RAL 1019	RAL 6011	RAL 8014	
RAL 1021	RAL 7001	RAL 8019	
RAL 2000	RAL 7012	RAL 9001	
RAL 2002	RAL 7016	RAL 9002	
RAL 2004	RAL 7021	RAL 9003	
RAL 3000	RAL 7030	RAL 9005	
RAL 3002	RAL 7031	RAL 9010	
RAL 5003	RAL 7032	RAL 9011	

For Interior Application the above colors are available in:

Smooth Matte	(Series 09 Polyester-Epoxy Blend)
Rough Texture Matte	(Series 09 Polyester-Epoxy Blend)
Rough Texture Glossy	(Series 89 Polyester-Epoxy Blend Low/Fast Cure)
Smooth Semigloss	(Series 89 Polyester-Epoxy Blend Low/Fast Cure)
Fine Texture	(Series 89 Polyester-Epoxy Blend Low/Fast Cure)

For Exterior Applications the following products are available:

Smooth Matte	Black Matte 39/80020	(Polyester TGIC)
	Black Matte RAL 9005 44/80010	(Polyurethane)
	Black Flat Matte RAL 9005 44/80011	(Polyurethane)
	Black Matte RAL 9005 49/80350	(Polyester TGIC)
	Black Matte RAL 9005 59/80350	(Polyester TGIC-Free)
	White Matte 39/10040	(Polyester TGIC)
	White Matte RAL 9016 44/10011	(Polyurethane)
	White Flat Matte RAL 9016 44/10012	(Polyurethane)
	White Matte RAL 9010 49/10103	(Polyester TGIC)
	White Matte 49/11350	(Polyester TGIC)
White Matte RAL 9010 59/10103	(Polyester TGIC-Free)	
Smooth Semigloss	Black Semigloss 39/80040	(Polyester TGIC)
	Black Semigloss RAL 9005 44/80013	(Polyurethane)
	White Semigloss RAL 9016 44/10010	(Polyurethane)
Rough Texture Glossy	Black RTG RAL 9011 49/80990	(Polyester TGIC)
	White RTG 49/11570 Nature White	(Polyester TGIC)

Custom Colors: Custom colors are available in 10 working days or less with a minimum order of 220 lb.

Standard Product Catalog: For other colors and finishes available please refer to our Standard Product Catalog of more than 1200 powder coatings.

Notes

Colors and textures have been matched as closely as possible. Paper and ink limitations as well as influence of heat and light account for differences from actual coatings. To aid in final product selection please contact your local Tiger Drylac office for a powder-coated Q-Panel of the product of your choice.

Datasheets: Periodically updated datasheets, showing cure parameters, test results, pretreatment information and more are available for all products in this chart. Please contact your local Tiger Drylac office or download the latest version from our web site www.tiger.at

Fluorescent: 1- and 2-coat fluorescent finishes have limited UV stability.

Hammertones: Series 89 low/fast cure Hammertones are for interior applications only. Exterior grade Hammertones are available as a custom order in any color.

Transparent and Candy: Hues of color, simulating galvanized finishes, may be applied over nickel plated substrates or chrome, brushed aluminum or alternatively Tiger Drylac Mirror Silver 49/91260.

Dormant Transparent and Clear: Dormant Transparents are applied as the base coat in this system. The flamboyant shades of color will not evolve until a topcoat is applied. Samples in this chart are just a few of the many variations of attractive colors that can be achieved by top coating with a variety of our Clears and Glitters.

Clear Coatings available:

- Clear Glossy 39/00020
- Clear Glossy 49/00530
- Clear Semigloss 49/00280
- Clear Matte 16/00030
- Clear Ice Matte 69/00300

Glitter Coatings available:

- Gold 49/00310
- Silver 49/00320
- Red 49/00330
- Blue 49/00340
- Green 49/00350
- Nightblue 49/00370
- Starlight 49/00380
- Twilight 49/00390

Antico: For that out-of-the ordinary look, simulating natural stone and oxidation of copper, exterior grade Anticos can provide a decorative finishing solution. Textured and Matte Finishes: The following selection of 38 of our 187 smooth glossy RAL colors are also available in a variety of other finishes:



Offices and Warehouses

West Coast

1251 E. Belmont Street
Ontario, CA 91761
Phone: (909) 930-9100
Fax: (909) 930-9111

Northwest

18808 142nd Avenue N.E., Suite 5B
Woodinville, WA 98072
Phone: (425) 481-3160
Fax: (425) 481-1136

Midwest

3855 Swenson Avenue
St. Charles, IL 60174
Phone: (630) 513-9999
Fax: (630) 513-9998

East Coast

1100 Commons Blvd.
Reading, PA 19605
Phone: (610) 926-8148
Fax: (610) 926-8149

Southeast

3400 Town Pt. Drive NW, Suite 140
Kennesaw, GA 30144
Phone: (770) 218-2490
Fax: (770) 218-2495

South

339 Exchange Drive
Arlington, TX 76011
Phone: (817) 277-7995
Fax: (817) 277-1931



Member of the
Powder Coating Institute